

SVAC4-2

Vacuum Oven Spec Sheet



Model Name / Order Part ID	SVAC4-2 / SLV422-EA
Exterior Dimensions (W x D x H)	27.0" x 35.2" x 32.8" 686 x 895 x 833 mm
Interior Dimensions (W x D x H)	18" x 24" x 18" 457 x 610 x 457 mm
Interior Volume	4.50 cu.ft. (127.4 liters)
Unit Weight	317 lb (144 kg)
Shipping Weight	462 lb (210 kg)
Interior Construction	300 Stainless Steel
Exterior Construction	Painted Cold Roll Steel
Standard Chamber Gasket	Silicone
Shelves	3 included, 6 Max
Shelf Dimensions (W x D)	17.2" x 22.9" (437 x 582 mm)
Maximum Weight per Shelf	35 lb (15.8 kg)
Permitted Total Load	105 lb (47.6 kg)
Controls	EZ-ZONE Watlow
Access Port	KF-25
Vertical Clearance	12" (305 mm)
Wall Clearance, Each Side	6" (152 mm)
Wall Clearance, Rear	12" (305 mm)

Electrical Data

Frequency	50/60Hz
Voltage	220V-240V
Power Current (Max Draw), Amps	7
Nominal Power (watts @150°C)	936
Plug Supplied	NEMA 5-15P / EU1-16P

Energy Consumption (kWh/day)

At 80°C	18.1
At 150°C	21.8
At 220°C	34.5

Temperature Data

Heat-Up to Ambient — Minutes to 80°C	70
Heat-Up to Ambient — Minutes to 150°C	120
Heat-Up to Ambient — Minutes to 220°C	230
Temperature Range	10°C above ambient to 220°C
Temperature Stability	+/- 0.25°C @ 150°C
Operational Vacuum Range	-3.0 to -29.9 InHg
Vacuum Display Range	0-29.9 InHg

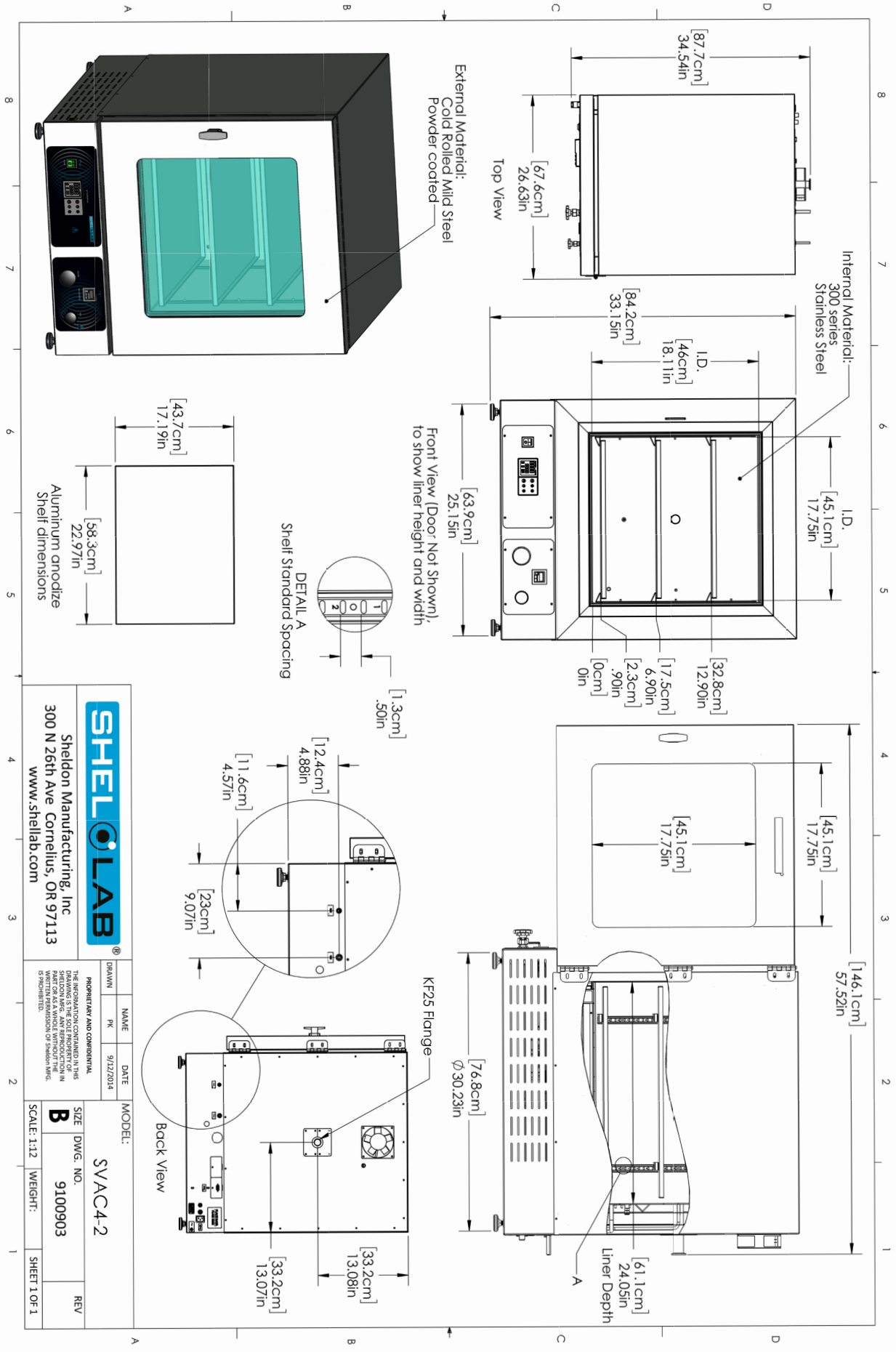
Misc.

Warranty	2 Year Limited Warranty
Safety Certifications	UL 61010-1, EN 61010-1, CSA 61010-1, CE



Learn More About Sheldon Manufacturing
sales@sheldonmfg.com
sheldonmanufacturing.com
 (503) 640-3000





		Sheldon Manufacturing, Inc 300 N 26th Ave Corvallis, OR 97113 www.shellab.com	
		DRAWN: PK NAME: SVAC4-2 DATE: 9/22/2014	MODEL: SVAC4-2 SIZE: B DWG. NO.: 9100903 SCALE: 1:12 WEIGHT: SHEET 1 OF 1
<small>THE INFORMATION CONTAINED IN THIS DRAWING IS THE SOLE PROPERTY OF SHELDON MANUFACTURING, INC. AND IS TO BE USED ONLY FOR THE PROJECT AND FABRICATION SPECIFICALLY IDENTIFIED HEREON AS A WHOLE WITHOUT THE WRITTEN PERMISSION OF SHELDON MFG. CO. PROPRIETARY AND CONFIDENTIAL.</small>			