

SMI12

Microbiological Incubator



Model Name / Order Part ID	SMI12/SLM1222
Capacity	11.7 cu.ft. (332 liters)
Interior Dimensions (W x D x H)	19.5" x 20.0" x 26.0" 495 x 508 x 660 mm
Exterior Dimensions (W x D x H)	25.3" x 27.3" x 76.0" 643 x 693 x 1930 mm
Unit Weight	316 lb (143.3 kg)
Shipping Weight	550 lb (250 kg)
Shelves	6 standard, 12 maximum
Maximum Weight Per Shelf	35 lb (15.9 kg)
Permitted Total Load	210 lb (95.3 kg)
Standard Door Gasket	Vinyl
Access Port	1
Controls	Digital
Warranty	2 Year Warranty
Interior Construction	430 Stainless Steel
Exterior Construction	Painted Cold Roll Steel
Vertical Clearance	2 inch (51 mm)
Wall Clearance, Each Side	4 inch (102 mm)
Wall Clearance, Rear	4 inch (102 mm)



Electrical

Electrical Supply /Hz, AC, 1Ø	50/60 Hz, 100-120 VAC, 12.0 Amps
Nominal Power (watts @ 37°C)	273 watts
Plug Supplied	NEMA 5-15P
Energy Consumption (kWh/day) - At 37°C	6.3

Temperature Range °C above ambient

Recovery after Door Opening (30 sec.) - Minutes to 37°C	5.0
Recovery after Door Opening (60 sec.) - Minutes to 37°C	6.0

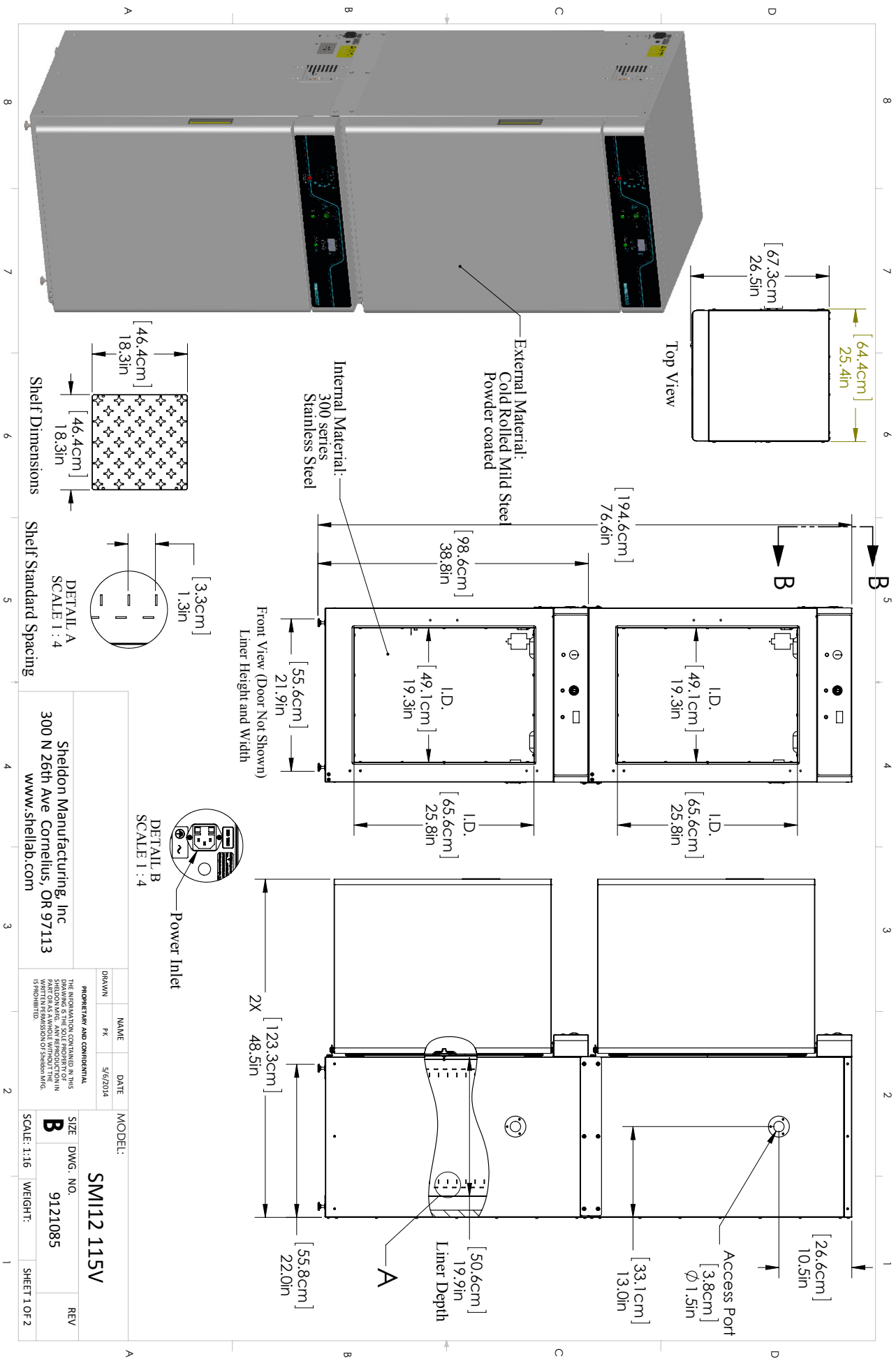
Temperature Uniformity

At 37°C	0.5
---------	-----



Learn More About Sheldon Manufacturing
sales@sheldonmfg.com
sheldonmanufacturing.com
 (503) 640-3000





Sheldon Manufacturing, Inc 300 N 26th Ave. Cornelius, OR 97113 www.shellab.com		SM112 115V	
DRAWN: PK NAME: DATE: 5/6/2014 MODEL:	SIZE: DWG. NO.: 9121085 SCALE: 1:16 WEIGHT:	REVISIONS: REV	SHEET 1 OF 2

PROPRIETARY AND CONFIDENTIAL
 THE INFORMATION CONTAINED IN THIS DRAWING IS THE SOLE PROPERTY OF Sheldon Manufacturing, Inc. NO PART OF THIS DRAWING IS TO BE REPRODUCED OR TRANSMITTED IN ANY FORM OR BY ANY MEANS, ELECTRONIC OR MECHANICAL, INCLUDING PHOTOCOPYING, RECORDING, OR BY ANY INFORMATION STORAGE AND RETRIEVAL SYSTEM, WITHOUT THE WRITTEN PERMISSION OF Sheldon Manufacturing, Inc.