

SMI2-2 Microbiological Incubator



Model Name / Order Part ID	SMI2-2/SLM222-E
Capacity	2.0 cu.ft. (56.3 liters)
Interior Dimensions (W x D x H)	15.0" x 15.0" x 15.2" 381 x 381 x 386 mm
Exterior Dimensions (W x D x H)	21.3" x 22.3" x 26.0" 541 x 566 x 660 mm
Unit Weight	83 lb (37.6 kg)
Shipping Weight	117 lb (53 kg)
Shelves	2 standard, 6 maximum
Maximum Weight Per Shelf	35 lb (15.9 kg)
Permitted Total Load	70 lb (31.8 kg)
Standard Door Gasket	Vinyl
Access Port	1
Controls	Digital
Warranty	2 Year Warranty
Interior Construction	430 Stainless Steel
Exterior Construction	Painted Cold Roll Steel
Vertical Clearance	2" (51 mm)
Wall Clearance, Each Side	4" (102 mm)
Wall Clearance, Rear	4" (102 mm)



Electrical

Electrical Supply /Hz, AC, 1Ø	50/60 Hz, 220-240 AC, 3.0 Amps
Nominal Power (watts @ 37°C)	90 watts
Plug Supplied	EU1-16P
Energy Consumption (kWh/day) - At 37°C	2.1

Temperature Range Ambient +8°C to 70°C

Recovery after Door Opening (30 sec.) - Minutes to 37°C	4.0
Recovery after Door Opening (60 sec.) - Minutes to 37°C	5.0

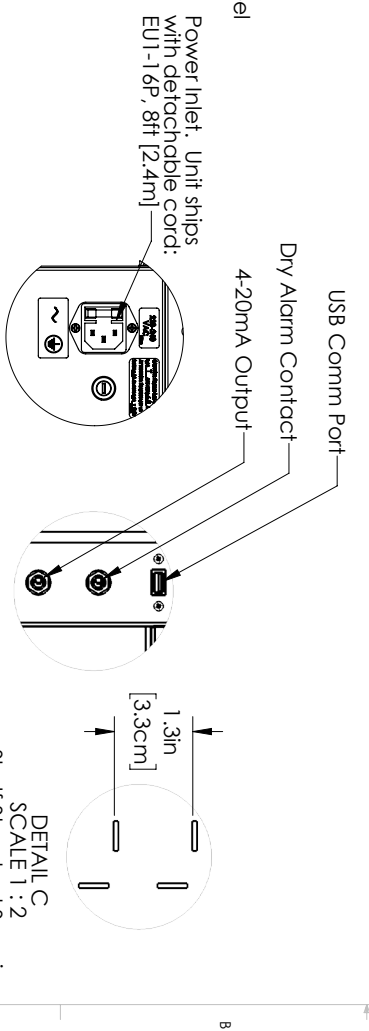
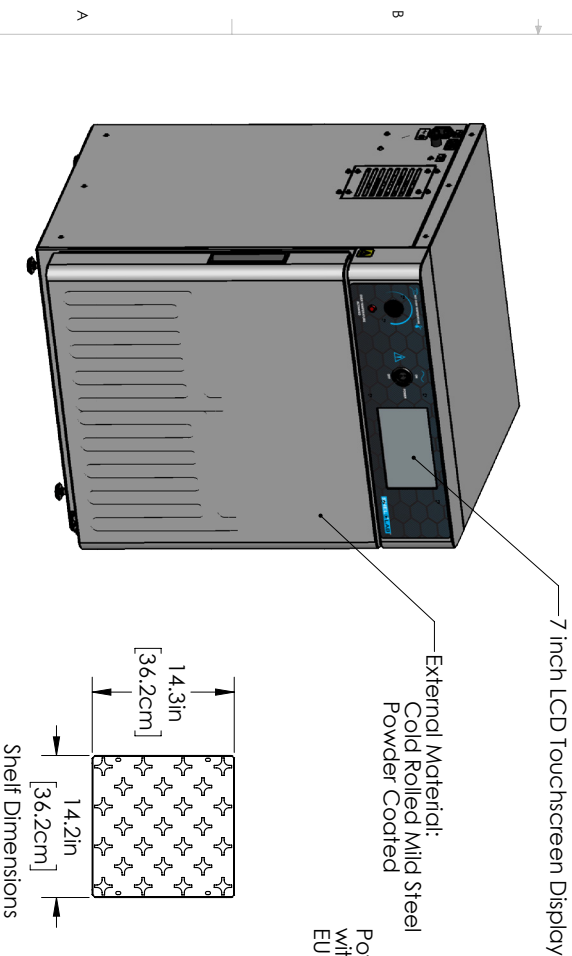
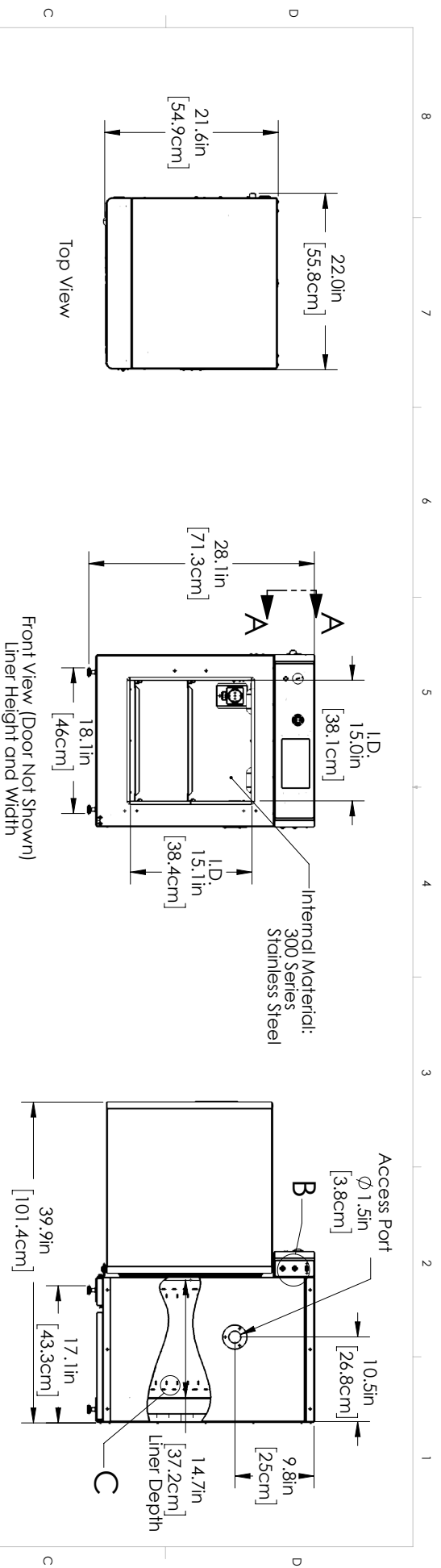
Temperature Uniformity

At 37°C	0.5
---------	-----



Learn More About Sheldon Manufacturing
sales@sheldonmfg.com
sheldonmanufacturing.com
 (503) 640-3000





SHELL LAB
 Sheldon Manufacturing, Inc
 300 N 26th Ave
 Cornelius, OR 97113
 www.shellab.com

PROPRIETARY AND CONFIDENTIAL	DATE	MODEL:
DRAWN	4/4/2018	SM12-2 INC 2CF DRY 220-240V SL
NAME	TIG	SIZE DWG. NO.
		B 9121275
		REVISION
		SCALE: 1:12 WEIGHT: SHEET 1 OF 1

THE INFORMATION CONTAINED IN THIS DRAWING IS THE SOLE PROPERTY OF SHELDON MANUFACTURING, INC. NO PART OF THIS DRAWING IS TO BE REPRODUCED OR TRANSMITTED IN ANY FORM OR BY ANY MEANS, WITHOUT THE WRITTEN PERMISSION OF SHELDON MANUFACTURING, INC.