

Part ID	75400-707
----------------	------------------

Capacity	0.26 cu.ft. (7.4 liters)
Interior Dimensions (W x D x H)	12.5" x 6.1" x 6.0" 318 x 154 x 152 mm
Exterior Dimensions (W x D x H)	16.1" x 22.1" x 12.1" 408 x 562 x 308 mm
Unit Weight	73.7 lb (33.4 kg)
Shipping Weight	106 lb (48 kg)
Interior Construction	Aluminum
Exterior Construction	300 Stainless Steel/CR
Wall Clearance, Each Side	4" (102 mm)
Wall Clearance, Rear	4" (102 mm)
Tank Size	7 liters
Tank Fill Capacity	5 liters
Dry Weight	46.6 lb

Electrical	
-------------------	--

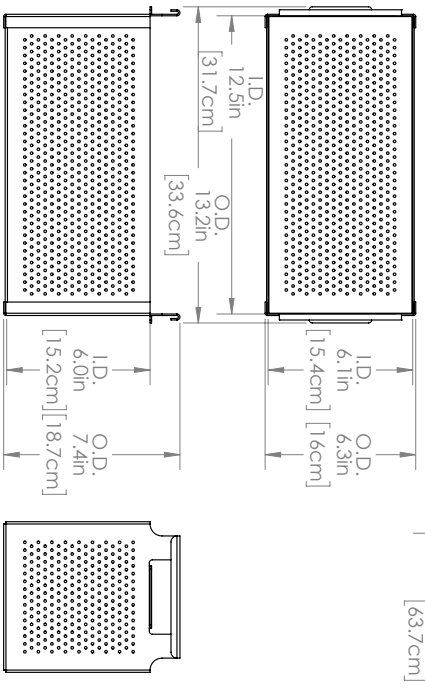
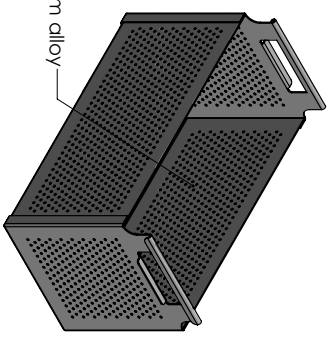
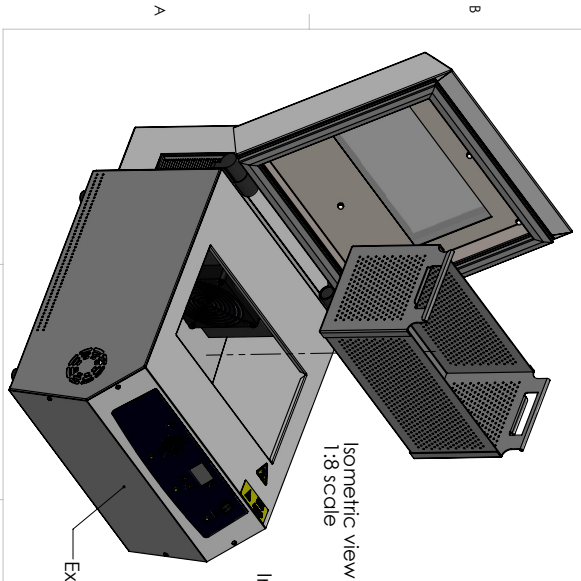
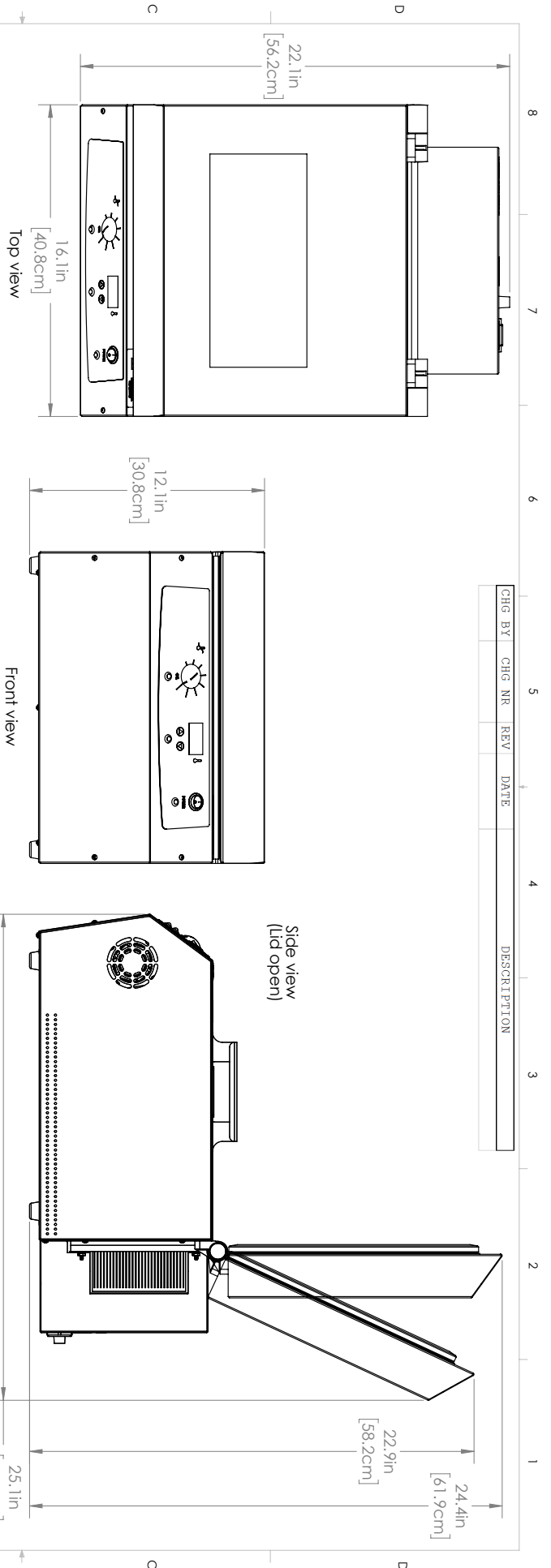
Electrical Supply /Hz, AC, 1Ø	50/60 Hz, 100-240 AC, 275 Watts
Plug Supplied	NEMA5-15P, EU1-16P

Temperature Specifications	
-----------------------------------	--

Temperature Range	2°C to 70°C
Temperature Uniformity - At 4°C	0.4
Temperature Uniformity - At 37°C	0.5
Temperature Uniformity - At 70°C	1.5
Temperature Stability - At 37°C	0.1

We reserve the right to alter specifications at any time

CHG BY	CHG NR	REV	DATE	DESCRIPTION



Lab ARMOR®
 Lab Armor, LLC
 2010 Century Center Blvd, Ste 21, Irving, TX 75062
 www.labarmor.com

DATE	NAME	MODEL:
9/8/2020	JAB	PELTIER BEAD BATH 7L

DRAWN: JAB
 PROPRIETARY AND CONFIDENTIAL
 THE INFORMATION CONTAINED IN THIS DRAWING IS THE SOLE PROPERTY OF LAB ARMOR, LLC. ANY REPRODUCTION IN ANY FORM WITHOUT THE WRITTEN PERMISSION OF LAB ARMOR, LLC IS PROHIBITED.

SIZE: DWG. NO. 9021225
 SCALE: 1:5
 REV