

Part ID **75400-714**

Capacity 0.52 cu.ft. (14.8 liters)

Interior Dimensions (W x D x H) 12.5" x 6.1" x 6.0"
318 x 154 x 152 mm

Exterior Dimensions (W x D x H) 30.4" x 24.2" x 12.2"
772 x 615 x 310 mm

Unit Weight 135.1 lb (61.3 kg)

Shipping Weight 136.0 lb (62.0 kg)

Interior Construction Aluminum

Exterior Construction 300 Stainless Steel/CR

Wall Clearance, Each Side 4" (102 mm)

Wall Clearance, Rear 4" (102 mm)

Tank Size 14 liters

Tank Fill Capacity 10 liters

Dry Weight 81.0 lb

Electrical

Electrical Supply /Hz, AC, 1Ø 50/60 Hz,
100-240 AC,
550 Watts

Plug Supplied NEMA5-15P, EU1-16P

Temperature Specifications

Temperature Range 2°C to 70°C

Temperature Uniformity - At 4°C 0.5

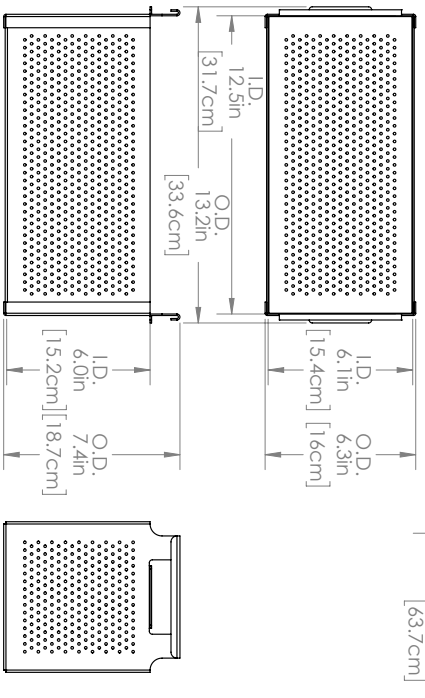
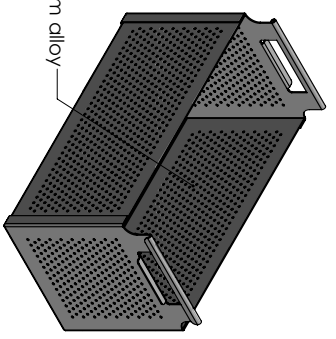
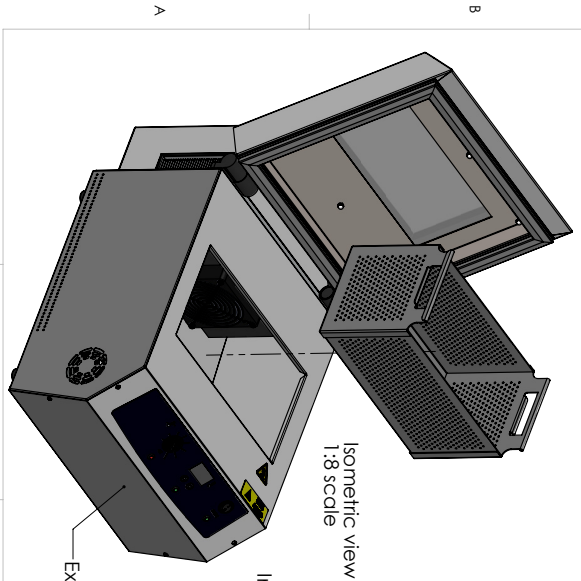
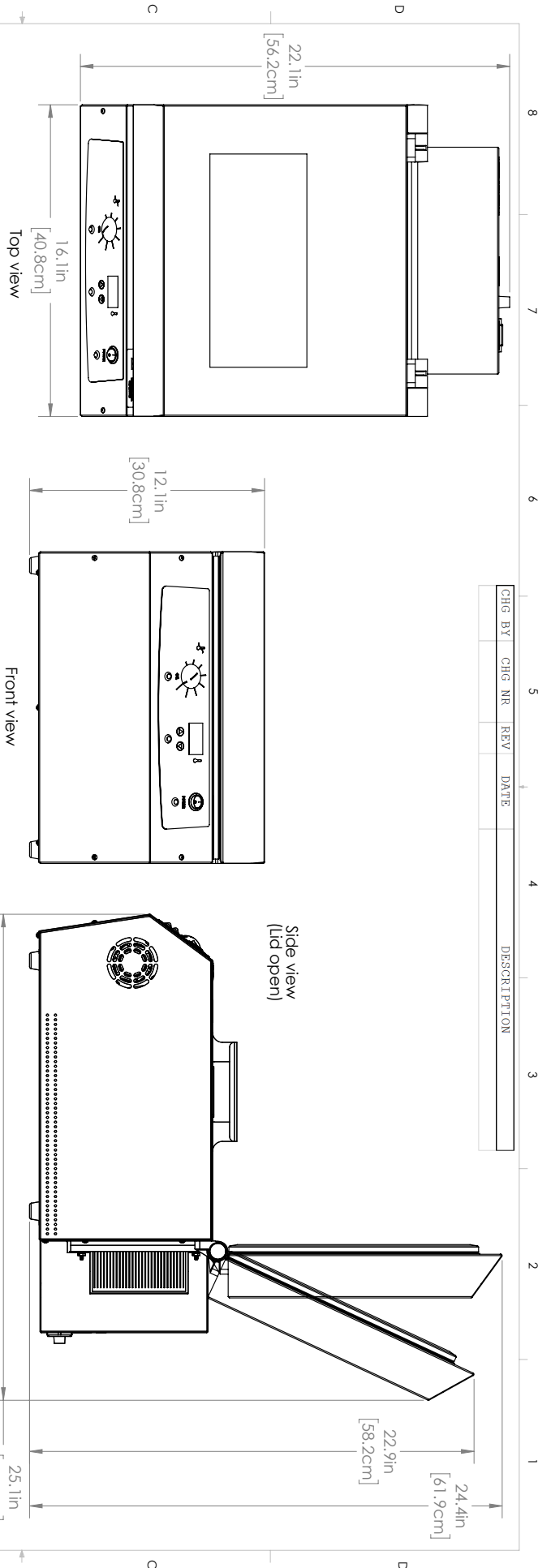
Temperature Uniformity - At 37°C 0.5

Temperature Uniformity - At 70°C 1.3

Temperature Stability - At 37°C 0.1

We reserve the right to alter specifications at any time

CHG BY	CHG NR	REV	DATE	DESCRIPTION



Lab ARMOR®
 Lab Armor, LLC
 2010 Century Center Blvd, Ste 21, Irving, TX 75062
 www.labarmor.com

DATE	9/8/2020
NAME	JAB
DRAWN	JAB

PROPRIETARY AND CONFIDENTIAL
 THE INFORMATION CONTAINED IN THIS DRAWING IS THE SOLE PROPERTY OF LAB ARMOR, LLC. ANY REPRODUCTION IN ANY FORM WITHOUT THE WRITTEN PERMISSION OF LAB ARMOR, LLC IS PROHIBITED.

MODEL: PELTIER BEAD BATH 7L
 SIZE: B
 DWG. NO.: 9021225
 REV:

SCALE: 1:5
 SHEET 1 OF 1